

# Map 1. Study Area

**Village of Fayetteville  
Comprehensive Plan**

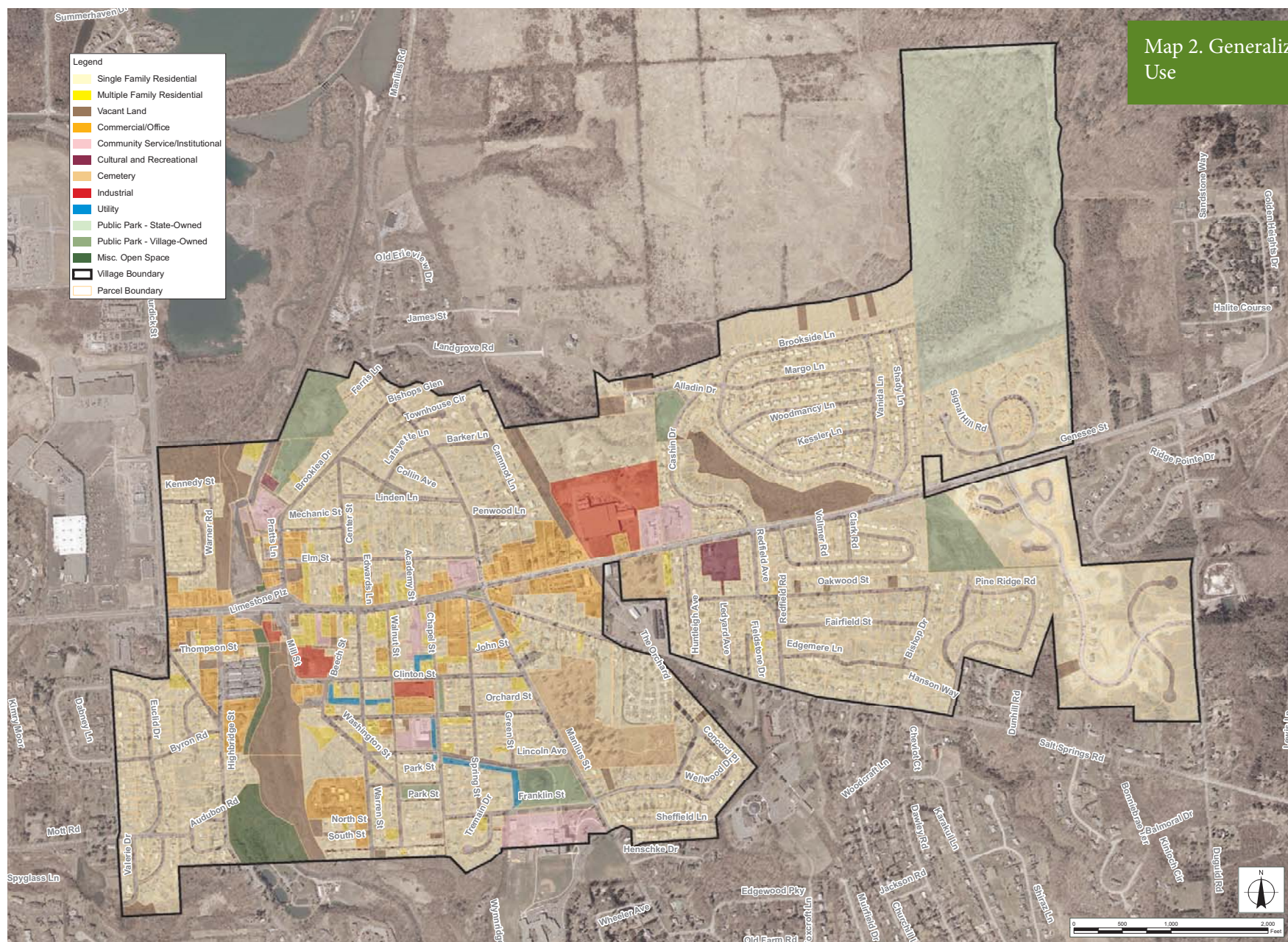
Town of Manlius  
Onondaga County, New York

September 2008

**Notes:**  
Base Map: Onondaga County Parcel  
Data in conjunction with the Onondaga  
County Water Authority, DOQQ 1ft  
Resolution Natural Color, Year 2003.







Map 2. Generalized Existing Land Use

## Village of Fayetteville Comprehensive Plan

Town of Manlius  
Onondaga County, New York

September 2008

**Notes:**  
Base Map: Onondaga County Parcel  
Data in conjunction with the Onondaga  
County Water Authority, DOQQ 1ft  
Resolution Natural Color, Year 2003.  
Land Use Data as of 2006.



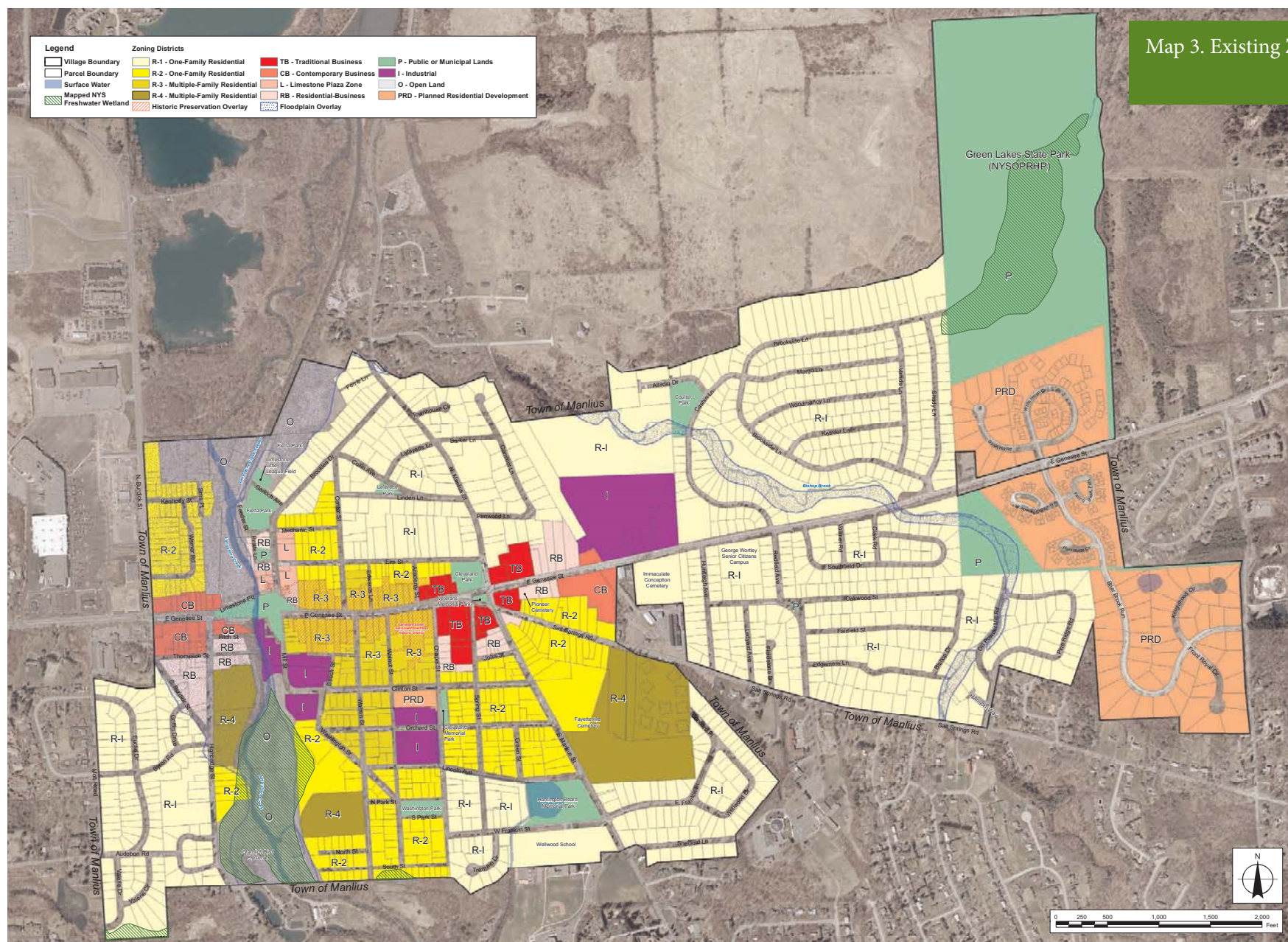
## Map 3. Existing Zoning

### Village of Fayetteville Comprehensive Plan

Town of Manlius  
Onondaga County, New York

September 2008

Notes:  
Base Map: Onondaga County Parcel  
Data in conjunction with the Onondaga  
County Water Authority, DOQQ 1ft  
Resolution Natural Color, Year 2003.





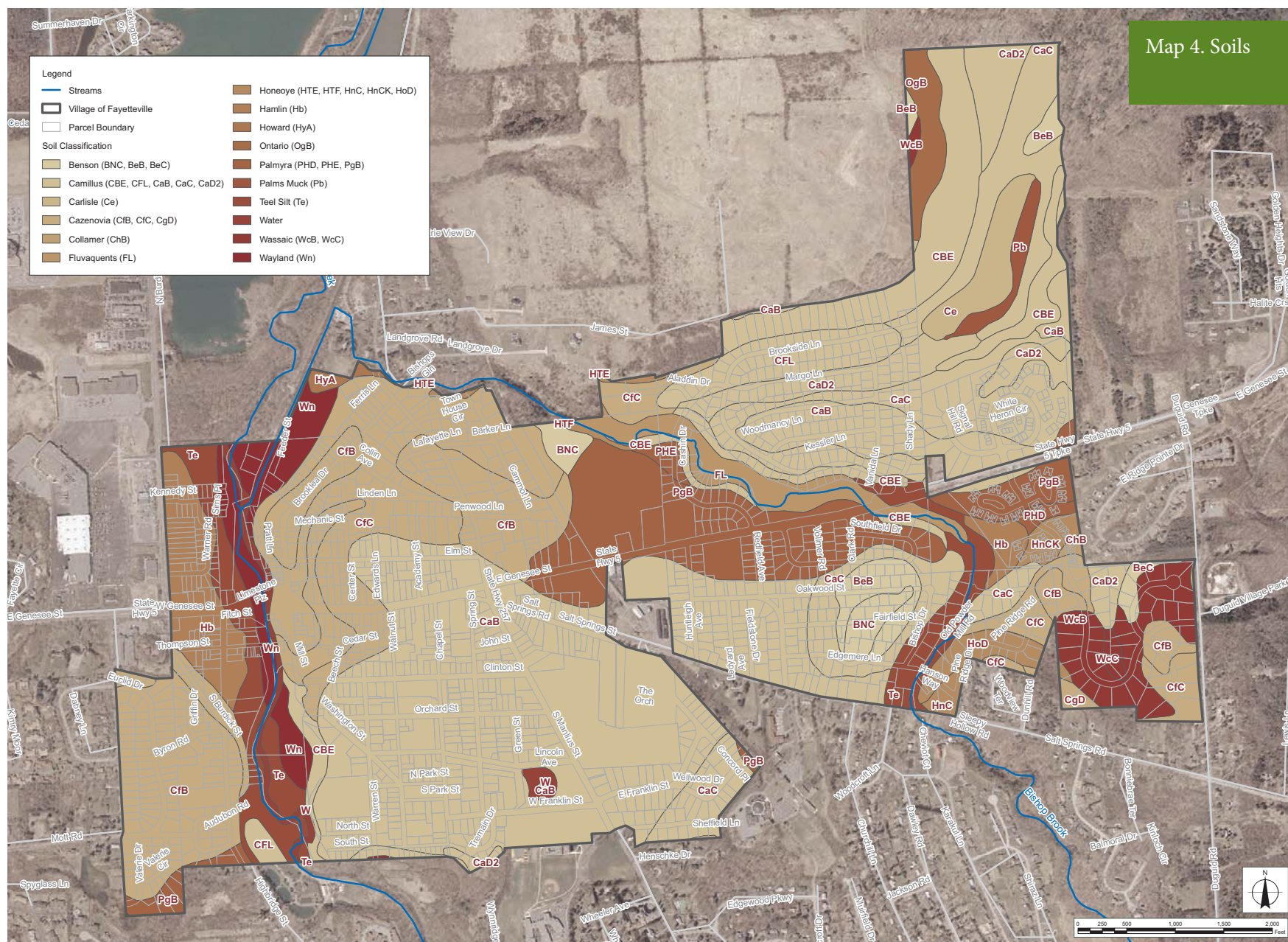
## Map 4. Soils

## Village of Fayetteville Comprehensive Plan

Town of Manlius  
Onondaga County, New York

September 2008

**Notes:**  
Base Map: Onondaga County Parcel  
Data in conjunction with the Onondaga  
County Water Authority. DOQQ 1 ft.  
Resolution Natural Color, Year 2003.





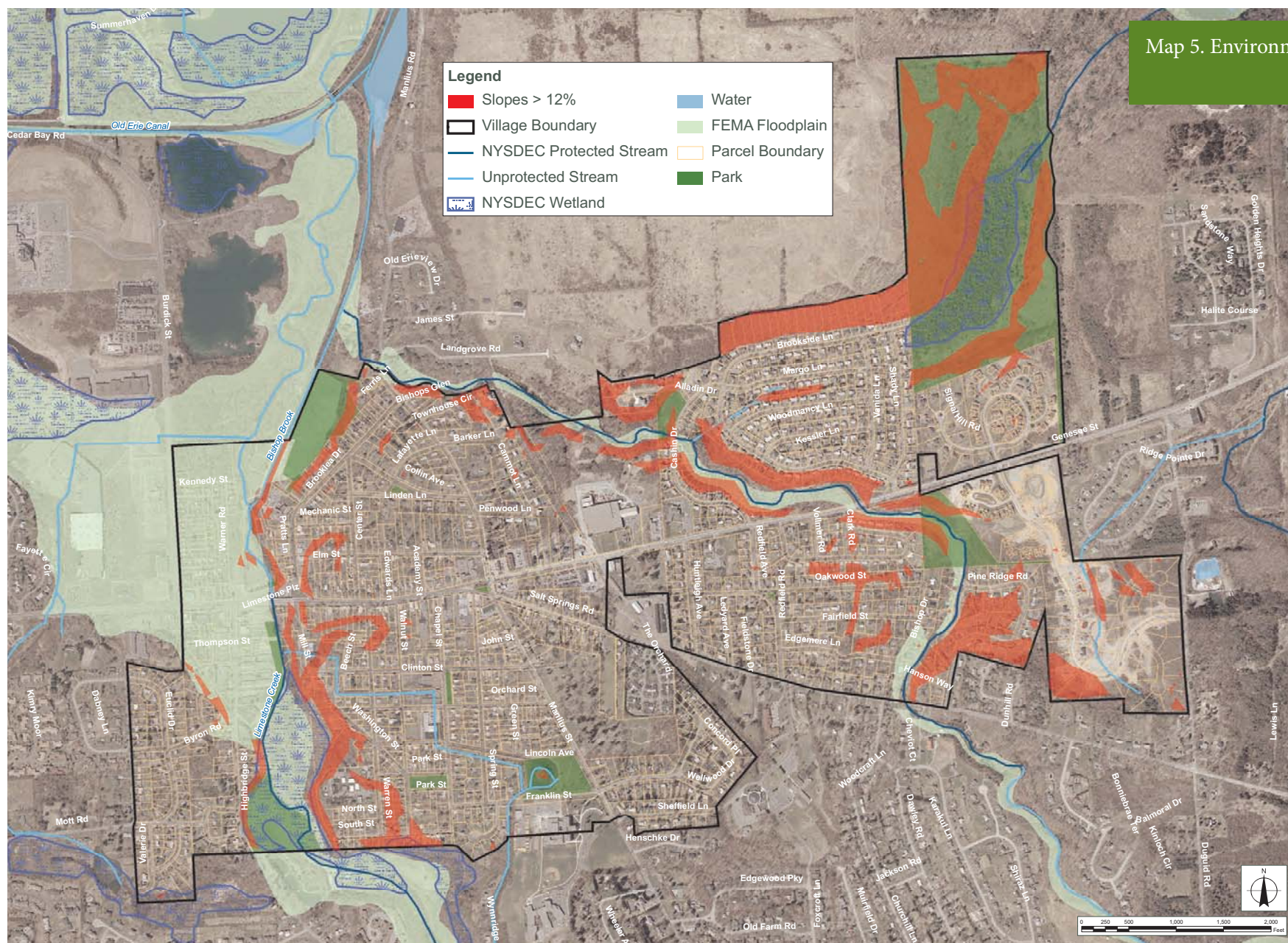
## Map 5. Environmental Considerations

### Village of Fayetteville Comprehensive Plan

Town of Manlius  
Onondaga County, New York

September 2008

**Notes:**  
Base Map: Onondaga County Parcel  
Data in conjunction with the Onondaga  
County Water Authority. DOQQ 1ft  
Resolution Natural Color, Year 2003.



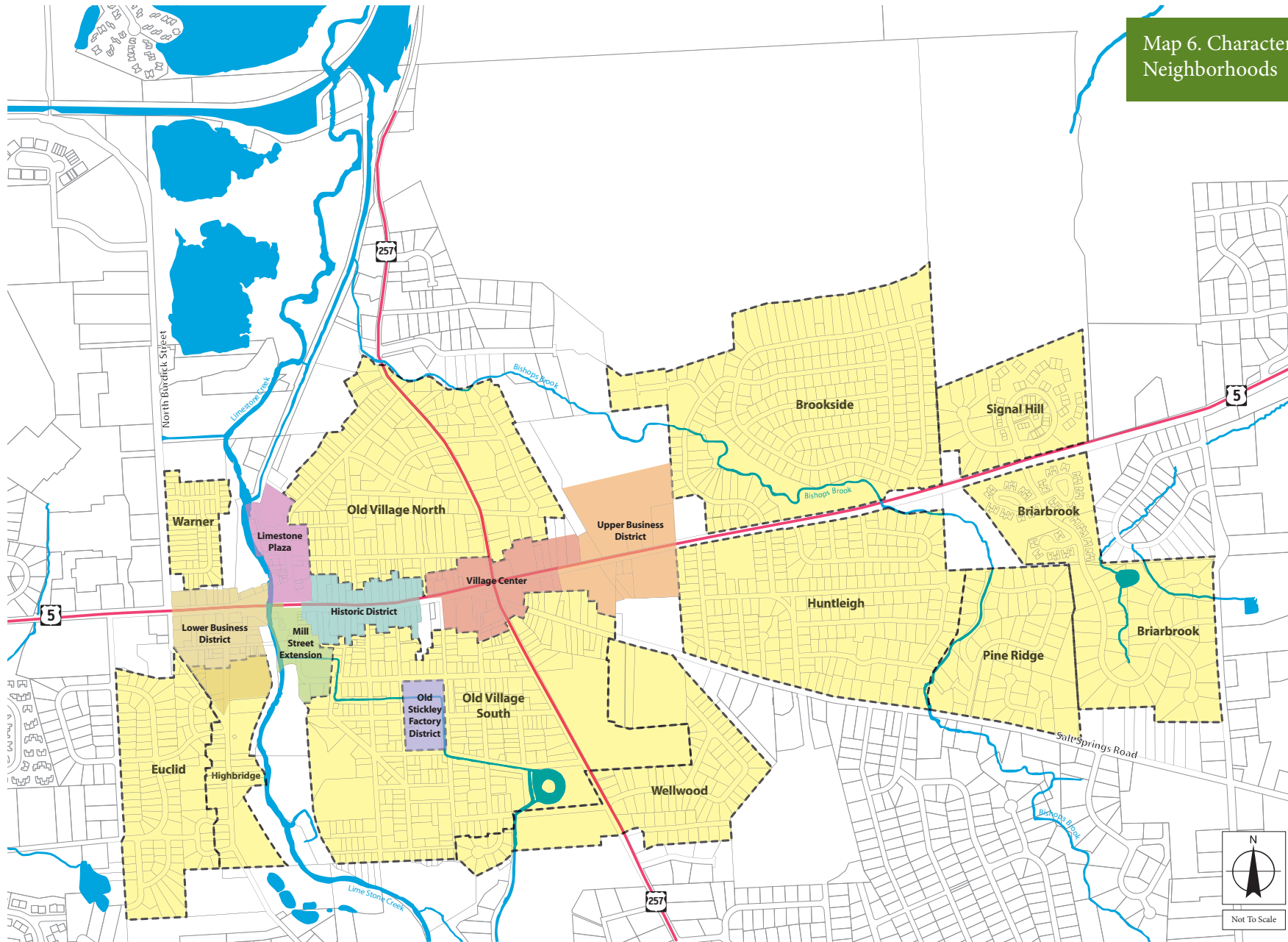


## Map 6. Character Areas & Neighborhoods

### Village of Fayetteville Comprehensive Plan

Town of Manlius  
Onondaga County, New York

September 2008



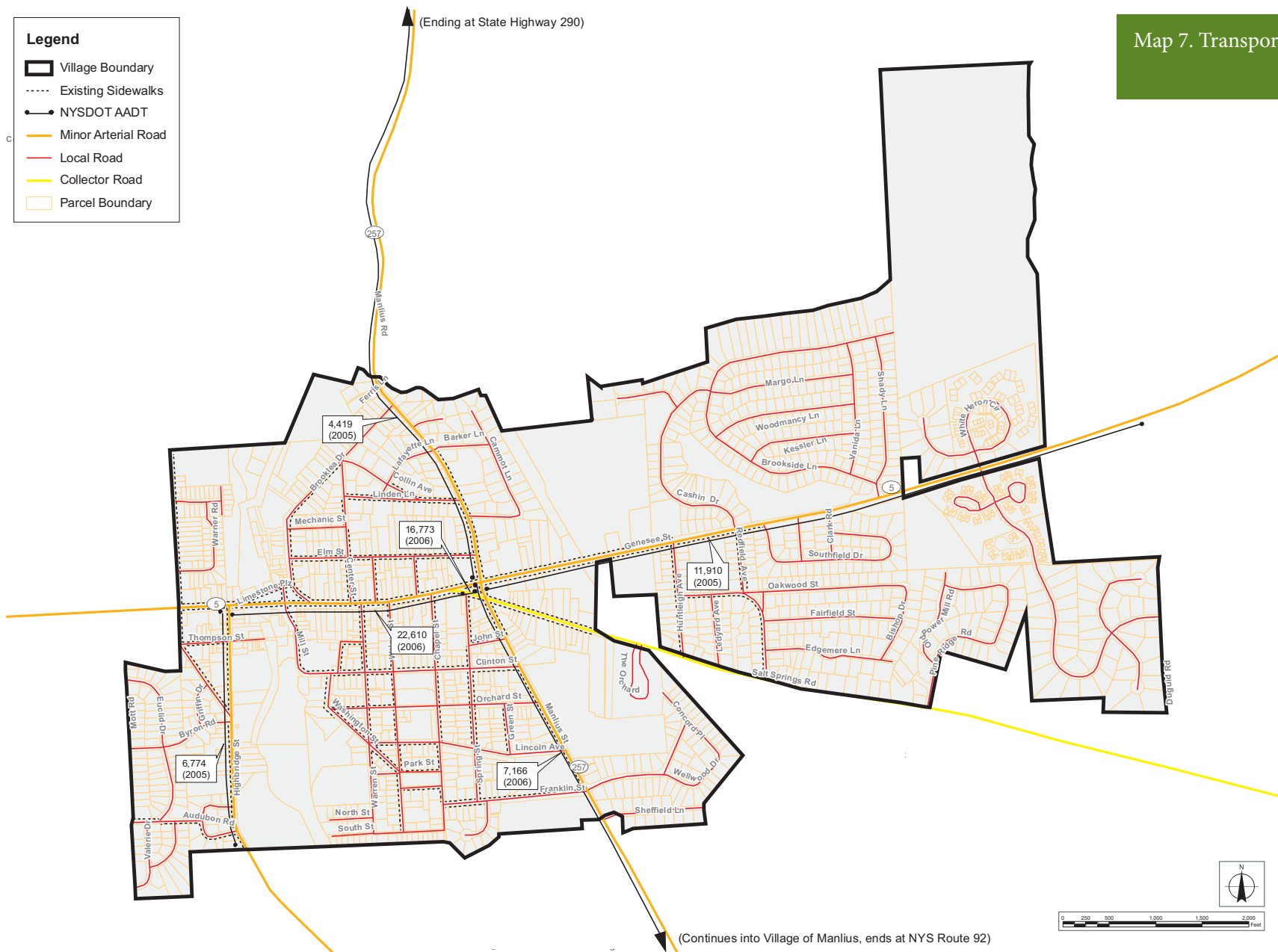
Notes:  
Base Maps: Onondaga County Parcel  
Data in conjunction with the Onondaga  
County Water Authority.

## Map 7. Transportation

### Village of Fayetteville Comprehensive Plan

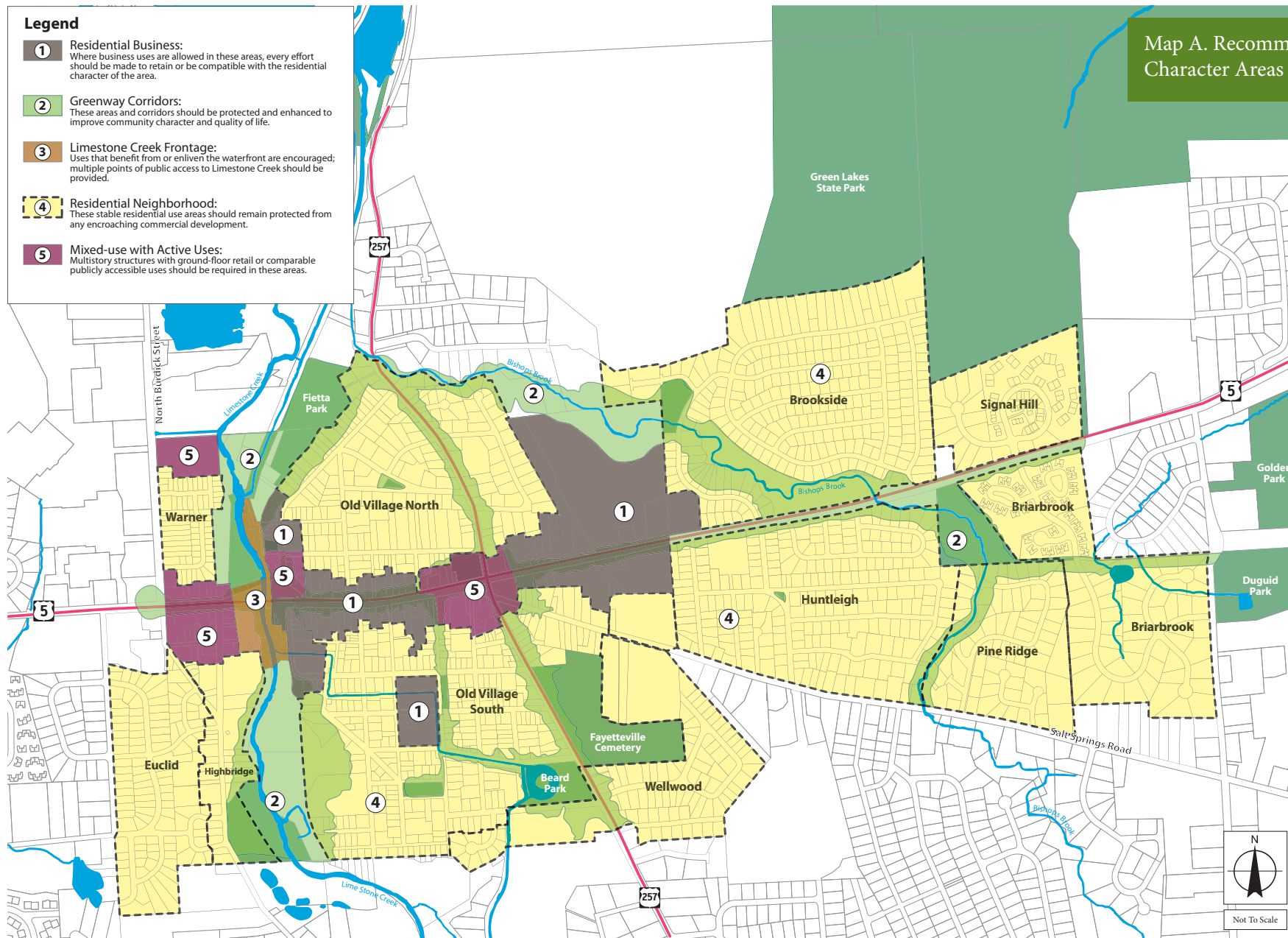
Town of Manlius  
Onondaga County, New York

September 2008



## Legend

- 1** **Residential Business:**  
Where business uses are allowed in these areas, every effort should be made to retain or be compatible with the residential character of the area.
- 2** **Greenway Corridors:**  
These areas and corridors should be protected and enhanced to improve community character and quality of life.
- 3** **Limestone Creek Frontage:**  
Uses that benefit from or enliven the waterfront are encouraged; multiple points of public access to Limestone Creek should be provided.
- 4** **Residential Neighborhood:**  
These stable residential use areas should remain protected from any encroaching commercial development.
- 5** **Mixed-use with Active Uses:**  
Multistory structures with ground-floor retail or comparable publicly accessible uses should be required in these areas.



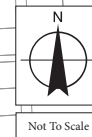
## Map A. Recommended Landuse Character Areas

### Village of Fayetteville Comprehensive Plan

Town of Manlius  
Onondaga County, New York

September 2008

Notes:  
Base Maps: Onondaga County Parcel  
Data in conjunction with the Onondaga  
County Water Authority.





# Map B. Illustrative Plan

## Village of Fayetteville Comprehensive Plan

Town of Manlius  
Onondaga County, New York

September 2008

Notes:  
Base Map: Onondaga County Parcel  
Data in conjunction with the Onondaga  
County Water Authority.

EDR

### Legend

- Parks
- Focal Planning Area
- Community Buildings
- Trails
- Gateways
- Extended sidewalks
- Area Considered for Annexation

**Waterfront:**  
Maximize recreational and residential opportunities along Village waterfront areas

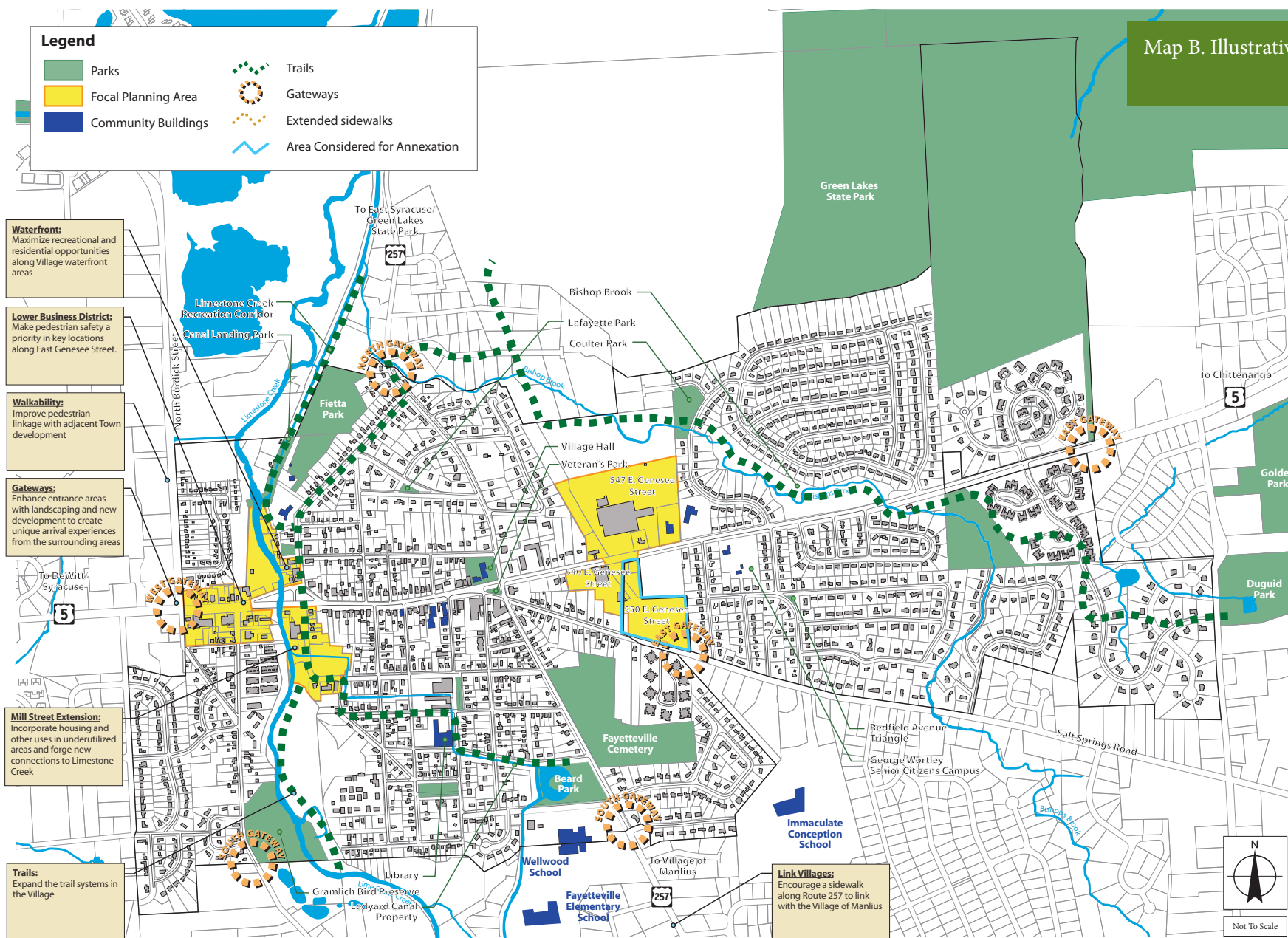
**Lower Business District:**  
Make pedestrian safety a priority in key locations along East Genesee Street.

**Walkability:**  
Improve pedestrian linkage with adjacent Town development

**Gateways:**  
Enhance entrance areas with landscaping and new development to create unique arrival experiences from the surrounding areas

**Mill Street Extension:**  
Incorporate housing and other uses in underutilized areas and forge new connections to Limestone Creek

**Trails:**  
Expand the trail systems in the Village



Not To Scale