

# Identifying Emerald Ash Borer

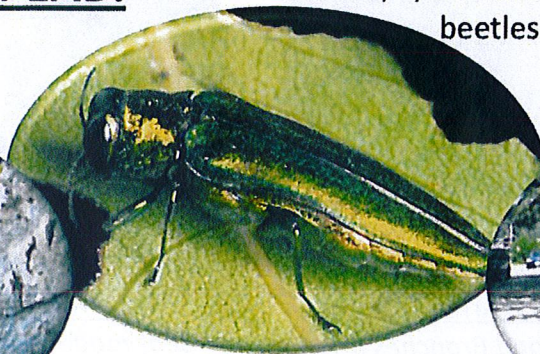
What to do if you think you have the ash-killing  
Emerald Ash Borer in your ash tree

## Verify the signs of EAB:

1/8" "D" shaped  
exit holes



Small, 3/4" metallic green  
beetles



"S" shaped tunnels  
under the bark



Thin/dead  
branches

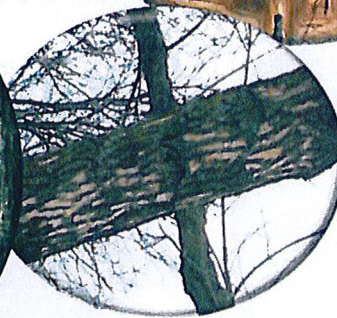


Trunk sprouts



Bark splitting

Excessive  
woodpecker  
activity



**Verify your tree:** Emerald Ash Borers only live in ash trees. Look up the characteristics of ash trees at Cornell's woody plant database.

<http://woodyplants.mannlib.cornell.edu/>



## **Report Your Sighting:**

E-mail pictures or bring samples of EAB signs and symptoms to your local  
Cornell Cooperative Extension office, <http://www.cce.cornell.edu>  
or Call the NYS DEC EAB Hotline at (866)640-0652

## **Educate Yourself:**

Emerald Ash Borer information and links can be found at

<http://nyis.info>

Photo credits: Edward Czerwinski, Ontario Ministry of Natural Resources, Bugwood.org; David Cappaert, Michigan State University, Bugwood.org; Daniel Herms, The Ohio State University, Bugwood.org; Pennsylvania Department of Conservation and Natural Resources - Forestry Archive, Bugwood.org; Jim Tresoutch, Village of Homewood, Bugwood.org; Mark Whitmore, Cornell University; and USDA-NRCS PLANTS Database / USDA NRCS, Wetland flora field office illustrated guide to plant species USDA Natural Resources Conservation Service.



Cornell University  
Cooperative Extension



Emerald Ash Borer information  
<http://nyis.info>